



Excellence  
Endeavour  
Enjoyment



Prospectus





# Welcome to Emmanuel Middle School

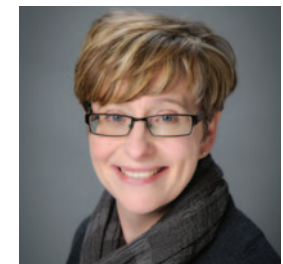
Thank you for your interest in Emmanuel CE Middle School.

Emmanuel is part of Initio Learning Trust. The Trust provides an outstanding education across nursery, first, middle and upper school phases, ensuring our children are given a broad and balanced education which prepares them well for success in

their future lives. I'm confident we will meet your expectations and more.

Thank you for taking the time to consider one of our schools within Initio Learning Trust.

**Liz West,**  
**Chief Executive Officer, Initio Learning Trust**



# Our pledge to you

Emmanuel Middle School is committed to providing expert education tailored to this most specialist of age groups, as pupils move from childhood into early adulthood.

Pupils who come to us will get the benefit of both an in-depth drive for excellence in the core primary curriculum as well as the enriched opportunities afforded especially to Middle School pupils. This enrichment includes dedicated weekly time in PE, Computing, Science, RE, French, Music, Technology and Art; all this from the age of nine!

For our emerging young adults, our Middle School provides consistency of support in a time of great change, whilst all the while maintaining the ethos of academic rigour. This is so necessary for their success in future examinations and employment: we actively signpost our young adults to the opportunities that future careers offer to fuel their sense of ambition and drive. By the end of Year 8 our pupils know and understand themselves so much better, ensuring a fast start to their next phase of education at Upper School.

At Emmanuel we have identified three core values to support pupils in their learning as they journey through the middle years and beyond. Firstly, we inspire pupils to aim for excellence in everything they do, in all areas of schooling and personal development.

Secondly, we encourage them to show endeavour through demonstrating a thirst for knowledge and a determination never to give up.

Finally, and very importantly to us, we actively encourage enjoyment in learning as we want all our pupils to be happy while they are with us. We respect each other and we work for each other.

As a Church of England school we aim to deliver the best of a values-led education in a Christian context for all children regardless of culture, ethnicity, religion or disability. Please know that whatever your faith position, a Church school has the highest regard for the uniqueness of all children and, as the true meaning of our name suggests, our mission is no less than heaven on earth for all our young people!

We hope this brochure gives you an insight into what makes Emmanuel special and we would be delighted to meet you and show you the school in more detail.



**Rob Christopher, Headteacher**



**'Pupils feel safe and are happy at this welcoming school'**

Ofsted, 2022

**'The nurturing environment and high expectations mean my children have thrived'**

Parent

**'The curriculum is broad and ambitious. It builds on what pupils have learned before and prepares them for their next steps in education'**

Ofsted, 2022

**'This is the best school ever!'**

Year 5 pupil

# Excellence

In wider society excellence is a bench mark of commitment and expectation that, if nurtured in young people, can define how far they take their individual talents. As US motivational author Ralph Marston puts it, 'Excellence is not a skill, it's an attitude', which we take to mean that anyone can learn to expect the best of themselves and others.

The Apostle Paul, writing to the Colossians (chapter 3 verse 22 The Message), says '...don't just do the minimum that will get you by. Do your best.'

We encourage excellence in young people through our reward system which celebrates the behaviours and actions that lead to excellence in the classroom, including: asking questions; taking risks in their learning; sharing ideas and producing their highest quality of work.

For every Candle Credit pupils are awarded they win rewards for their class and House group, as well as points towards their personal totals. The House system is central to our school ethos. Our House names reflect the individual qualities we aspire our pupils to live out.





PLACE VALUE YEAR 5 - (No Decimals)

HTb	TTh	T	H	Ten
100000	10000	1000	100	10
10000	1000	100	10	1
1000	100	10	1	
100	10	1		
10	1			
1				

PLACE VALUE YEAR 5 - (No Decimals)

HTb	TTh	T	H	Ten	One
100000	10000	1000	100	10	1
10000	1000	100	10	1	
1000	100	10	1		
100	10	1			
10	1				
1					



# Endeavour

At Emmanuel we encourage endeavour – within the classroom and beyond.

Showing endeavour helps pupils through that transition from childhood to young adulthood. Being able to show independence is a crucial part of development.

As Vince Lombardi, the famed American Football coach, put it: 'It's not whether you get knocked down, it's whether you get up!'

To encourage this value our reward system particularly celebrates:

- A quick start to lessons
- A thirst for knowledge
- Using initiative
- Being willing to make mistakes
- Never giving up



'Do your best' is part of a Bible passage that underpins the vision and values of the school. High expectations and an effective rewards system encourage pupils to do just that'

Ofsted, 2022

'The sense of togetherness and purpose at EMS inspires everyone to go beyond what might be thought as possible. As such, it is an 'incredible message for life' '

SIAMS Report, 2019

'There are many opportunities for pupils to develop their characters, interests and talents. Pupils aspire to the many leadership roles which are available to them'

Ofsted, 2022

'Pupils enjoy reading and know how important it is'

Ofsted, 2022



## Enjoyment

We pride ourselves on being a very happy school. It is very clear from all modern research, as well as common sense, that those who are happy in their work are generally able to be more productive and achieve work to a better standard.

As Oprah Winfrey puts it: 'Passion is energy. Feel the power that comes from focusing on what excites you'. This quote, like others in this brochure, is displayed around the school to help pupils know that the things we value are also rooted in the best ideals of Christian thought and contemporary culture.

Here are just a few examples of how enjoyment is celebrated at Emmanuel:

- Full engagement in lessons
- Unrelenting positivity
- Energy
- Respecting others
- Working with others



'The curriculum helps to develop pupils' characters. It teaches them about important issues, such as well-being, healthy relationships and equality. Collective worship, prayer trees and reflective journals support pupils' spiritual development'

Ofsted, 2022

'EMS is a little hidden gem'

Parent



## Partnerships

We thrive as an organisation by building strong partnerships. As a Church of England School this starts with our strong links to the Salisbury Diocese and, specifically, St Michael and All Angels Church in Verwood. We also work very closely with our feeder schools – Verwood First, Hillside First and Trinity First.

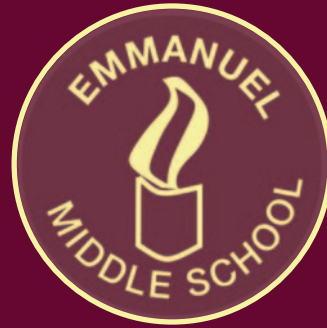
We are also a member of the innovative Initio Learning Trust. This partnership is all about excellence, providing Emmanuel with professional support and challenge to review its performance and share best practice across a network of ambitious schools.

Furthermore, we enjoy a strong relationship with our upper schools Ferndown Upper School and Queen Elizabeth's School, where the vast majority of our pupils finish their education. We work closely with them to ensure that the curriculum we teach lays a foundation for academic success in their GCSEs and beyond.

Finally, we aim to work with you, the parents, because we recognise that the best results come from working as a team; whether that is through the Parent Teacher and Friends Association or information evenings.



EMMANUEL  
CE MIDDLE  
SCHOOL



## Emmanuel Middle School

Howe Lane, Verwood

Dorset BH31 6JF


**T:** 01202 828100

**E:** [office@emmanuelmiddle.org](mailto:office@emmanuelmiddle.org)

**W:** [www.emmanuelmiddle.org](http://www.emmanuelmiddle.org)

Email: [info@initiolearning.org](mailto:info@initiolearning.org)

 [@initiolearning](https://twitter.com/initiolearning)

 Find us on Facebook

