

Paris Residential Trip 2026

- **Welcome**
- **Information updates**
- **Arrangements**





Key Information

- Monday 16th March to Friday 20th March 2026
- Monday - booked on EuroTunnel crossing at 11:20am
- Arrive at Chateau de Grande Romaine - approx 6pm French time
- Friday - booked on 2:50pm (1:50pm UK) - EuroTunnel crossing
- Arrive at Emmanuel - evening



Key Information

- Number of Year 7 pupils:
54
- Transport:
63 seater coach with Berrys
Coaches



Key Information

STAFFING:

Mr Foord

Mr Barker

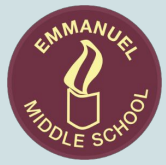
Mrs Christopher

Mrs Richardson

Mrs Alexander

Mr Parker





Communication

- Please call EMS first 01202 828100 (school hours only)
- In EMERGENCY ONLY call PGL Chateau de Grande Romaine -
Tel: 0033 1 64 43 16 08

Photos

Instagram: **ems.paris.2026**



This is a private group. We will not respond to comments or messages, please ensure you provide details for your own Instagram account not a child's account.

Any requests from unknown parties will not be accepted.

Our Photo pledge

We will always attempt to capture the moment in a very time driven process.

The photos posted on Instagram will be a snapshot to regularly keep you up to date of time we are having as a group.

We cannot always guarantee your child will be in that photo!

We are working on a folder with IT so you will have access once we return.



Departure and Return

- Friday: Packed suitcases can be left at school. Will be securely locked over the weekend. No valuables please.
- Departure: 6.15am Monday 16th March Please arrive at school at 5.30am and bring bags to Hall – pupils will be organised into groups – Travel bag with packed lunch – Essential travel documents / Money - boxes
- Return: Approx 6.00pm Friday 20th March
Please collect your child and passport / GHIC cards from their group leader and say thank you as this will be appreciated after a long trip.

Monday

One stop on route to the Tunnel - Cobham

One stop around one and a half hours into France.

Arrive at PGL

Entry/Exit New Biometric checks

Entry/Exit System (EES)

[https://www.leshuttle.com/uk-en/support/articles/entry-exit-system-\(ees\)-39866288391825](https://www.leshuttle.com/uk-en/support/articles/entry-exit-system-(ees)-39866288391825)

What is the Entry/Exit System (EES)?

The Entry/Exit System (EES) is a new EU regulation that records the biometric data (fingerprints and facial image) along with border crossing details of non-EU nationals entering or leaving the Schengen Area.

When does it start?

The Entry/Exit System (EES) is overseen directly at the border by PAF (Police aux Frontières – the French border police) and is being introduced in phases, starting from 12th October. At LeShuttle, the initial rollout only applies only to Coach and Freight traffic. The process for car passengers will be implemented later in the year.

Who does it apply to?

Non-EU nationals, including British nationals travelling on short stays (up to 90 days within a 180 day period). EES has no impact on other travellers (details can be found here).

How will it work?

When arriving at an EU border, applicable travellers will have their fingerprints and facial image scanned, in addition to the usual passport checks.

Reminder of how the days will look

Tuesday

Eiffel Tower

Pupils will struggle, they will find it hard, we will be climbing 1,665 steps!

We will split the whole group into confidence groups to ensure they are doing it at their own pace and can support each other.

Arc de Triomphe

We will go to the base and look around the Eternal Flame.

Small city tour on the route back to the centre

Evening activities at the centre

Wednesday

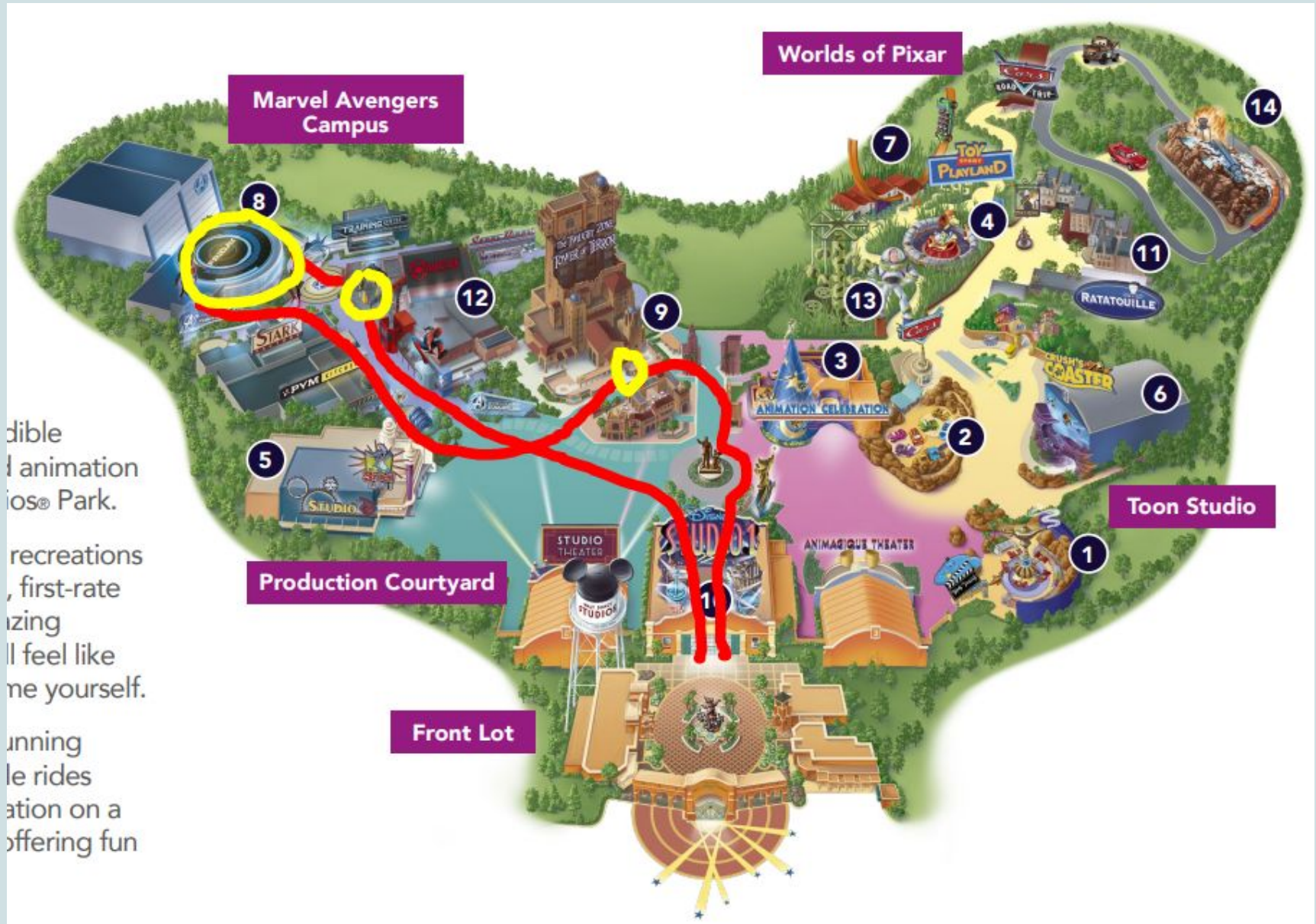
Disneyland Paris

You need to have an honest conversation with your child about their own confidence around the level of ride and what do they want out of their Disney experience.

We will facilitate groups before leaving to make sure they make the most out of the day.

Right clothing, we will be in the park till late.

Studios

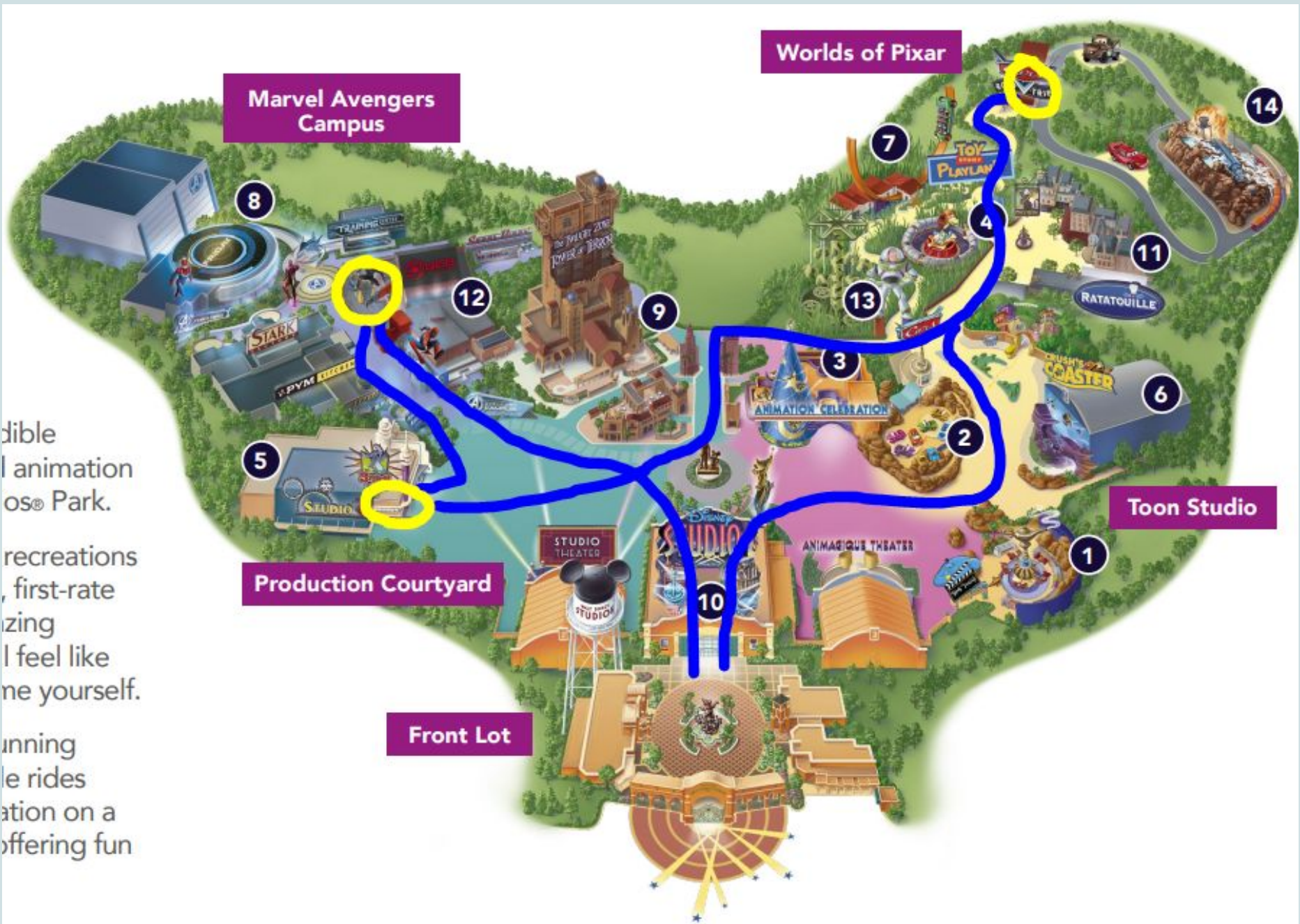


dible
l animation
ios® Park.

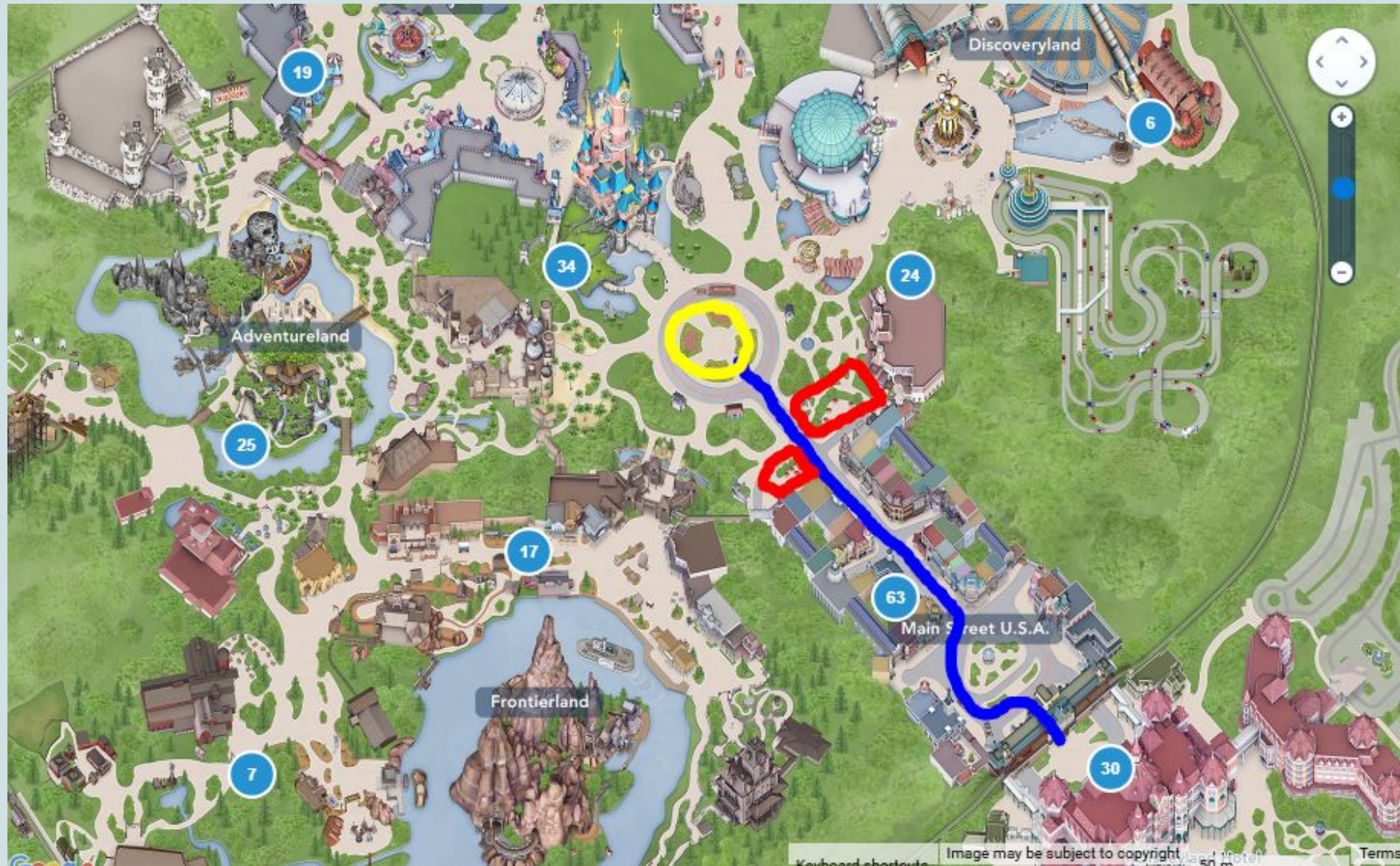
recreations
, first-rate
izing
ll feel like
ne yourself.

unning
le rides
ation on a
offering fun

dible
l animation
os® Park.
recreations
, first-rate
izing
I feel like
ne yourself.
inning
le rides
ation on a
ffering fun



Main Park





23

16

19

Fantasyland

Discoveryland

34

24

25

Adventureland

Dinner at Disney

They will be given a food voucher to use at one of the outlets

They will get food between the Parade and sitting down to watch fireworks

They will be with a member of staff to speed up process and distribute amongst the different outlets so 50 pupils don't all ascend into one building!

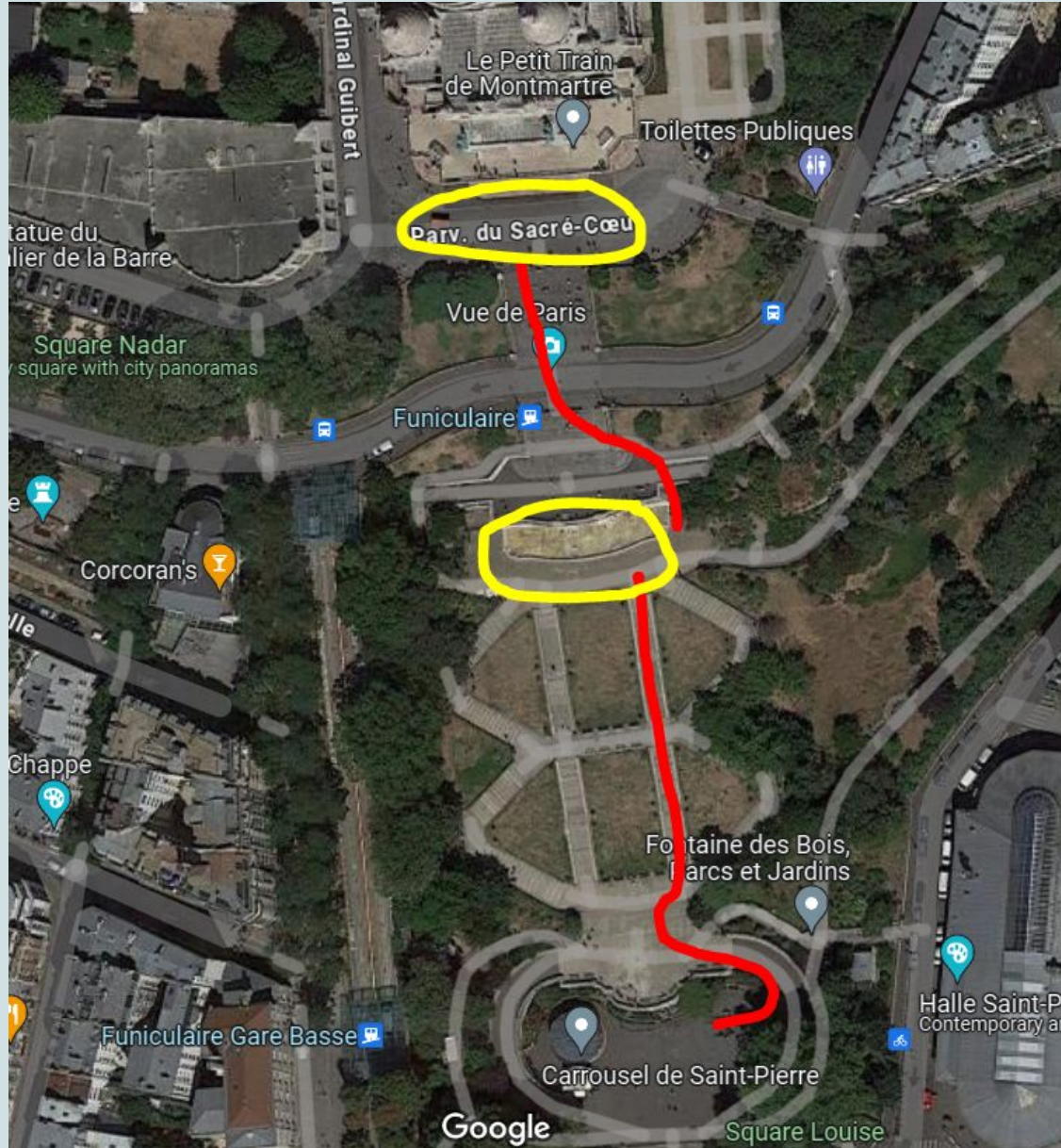
Thursday

Stade de France

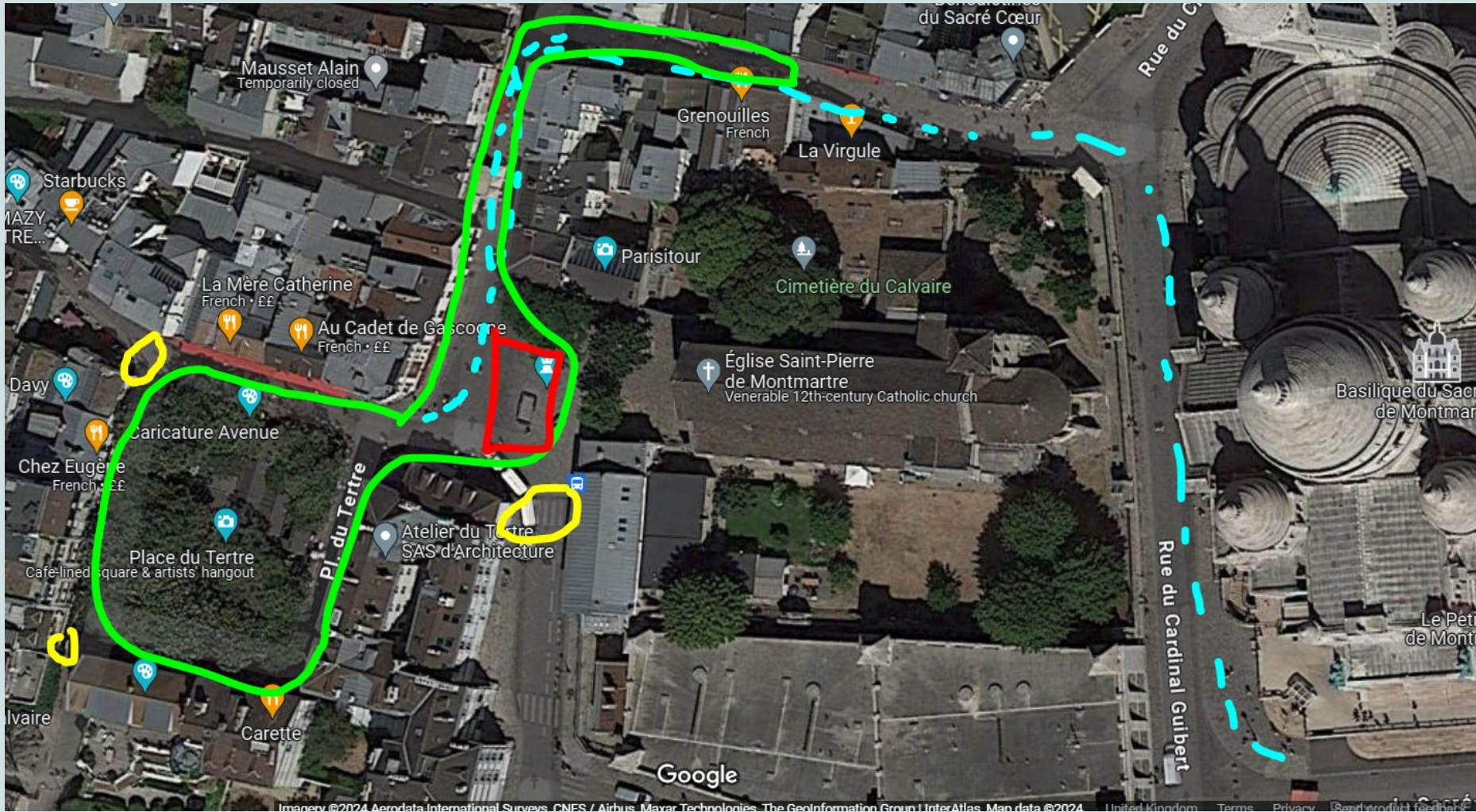
This will include a 30 Museum visit and then an hour's tour of the stadium.

We will be asking to focus on the different careers you can find in a stadium as well as getting a feel for what else happens on event days.

Sacre Coeur and Montmartre



Photos/ pictures/ crepes €15-25



Hypemarket

A chance for pupils to experience a shop that has everything!

This is where we recommend pupils to buy any souvenirs to bring back.

****This is at the coach driver's discretion****

Friday

Lunch at

Vimy Ridge - War memorial

Including a visit to the trenches and the memorial.

Aim to return back to EMS at 6pm

We will update the Instagram account when we have returned back to the UK from the tunnel.

Recommended money amounts

Monday- No money, just packed lunch

Tuesday- No money, there is not a opportunity to spend

Wednesday- Disney- most expensive day suggest allowing €40/50 depending on how much you would like you child to spend.

Thursday- Stade de France

Artist square- €15-25

Hypermarket- €20- 25

Friday- £10 for food at Cobham

Now until we depart

Each week I will be meeting with the pupils going on the French trip giving them a very detailed rundown of each day.

Please ask them about it, if you still have any questions just contact the office.

5/2 - Day 1

11/2 - Day 2

26/2 - Day 3

4/3 - Day 4

12/3 - Day 5

Room Choices

Option A - if we have been allocated our rooms we will get into room sizes and do it here.

Option B- We will get pupils to select 3 other pupils and I will guarantee 1 of those (likely be more)

Friendship at this stage in Year 7 are always very tricky to navigate. Once the rooms are set its very hard to swap. They really need to think about their choice.



Paperwork:

Consent forms include:

- medical needs - see details on next slide
- dietary requests

Please provide a copy of your child's passport and GHIC card to the office by Friday 27th February.



Medical & Consent Forms

- All medicines must be accompanied by a parental agreement to administer medicines form which is available from the EMS Office or can be collected tonight (one form for each medicine).
- Medicines must be handed in to the EMS Office in a named zip lock bag at the very latest by 27th February
- All medicines must be in their original boxes/containers and dosage/administering information must match with instructions on parental agreement form. Failure to ensure this may affect our ability to administer the medication.
- Please do not send paracetamol for “just in case” headaches etc. The school will take liquid paracetamol (and Strepsils for sore throats).

- We cannot administer aspirin or medicines containing ibuprofen unless they are prescribed by a doctor.
- Blue/reliever inhalers (which do not require a form) must be carried by pupils. For a brown/steroid inhaler a parental agreement form should be completed and the inhaler handed in.
- If parents have any questions about medicines etc. they should speak to Mrs Bartlett in the EMS Office.



What to Bring

- Sensible named clothing - dress for spring weather conditions
- Suitable footwear - walking shoes / trainers (NOT wellies)
- Warm rain jacket or coat
- Toiletries and sanitary products
- Towel
- Hairdryers
- Watch for Disney day for meet times
- If they want ONE smarter outfit for the DISCO
- Bin liner for dirty washing
- Please only ONE packed case / holdall - **pupils need to be able to carry this themselves**
- One small rucksack / bag for lunch on Monday / excursions
- ORIGINAL PASSPORT - Held by Group Leaders
- ORIGINAL GHIC Card - Held by Group Leaders
- Spending Money (suggested) €100 - in labelled envelopes for each day - Held by Group Leaders + maximum of £10 for the journey home (we do not take responsibility for any monies once handed over)
- Magazines / cards or a small game / reading book for journeys
- Notebook and pen, colouring pencils / pens



What Not to Bring

- Mobile phones or web enabled devices or computer games
- Aerosols - can set off smoke alarms
- No Chewing gum/ Energy Drinks
- Excessive food / drinks for Monday in their day bag.

They will need to manage the extras for the other days and not consume it all in one go!



Mobile Phones

We do not allow mobile phones because:

- Emmanuel school phone policy
- Safeguarding policy – privacy / photos
- PGL advice
- We want to avoid homesickness
- EMS staff have mobile phones for emergencies and contact with school

Any Questions?