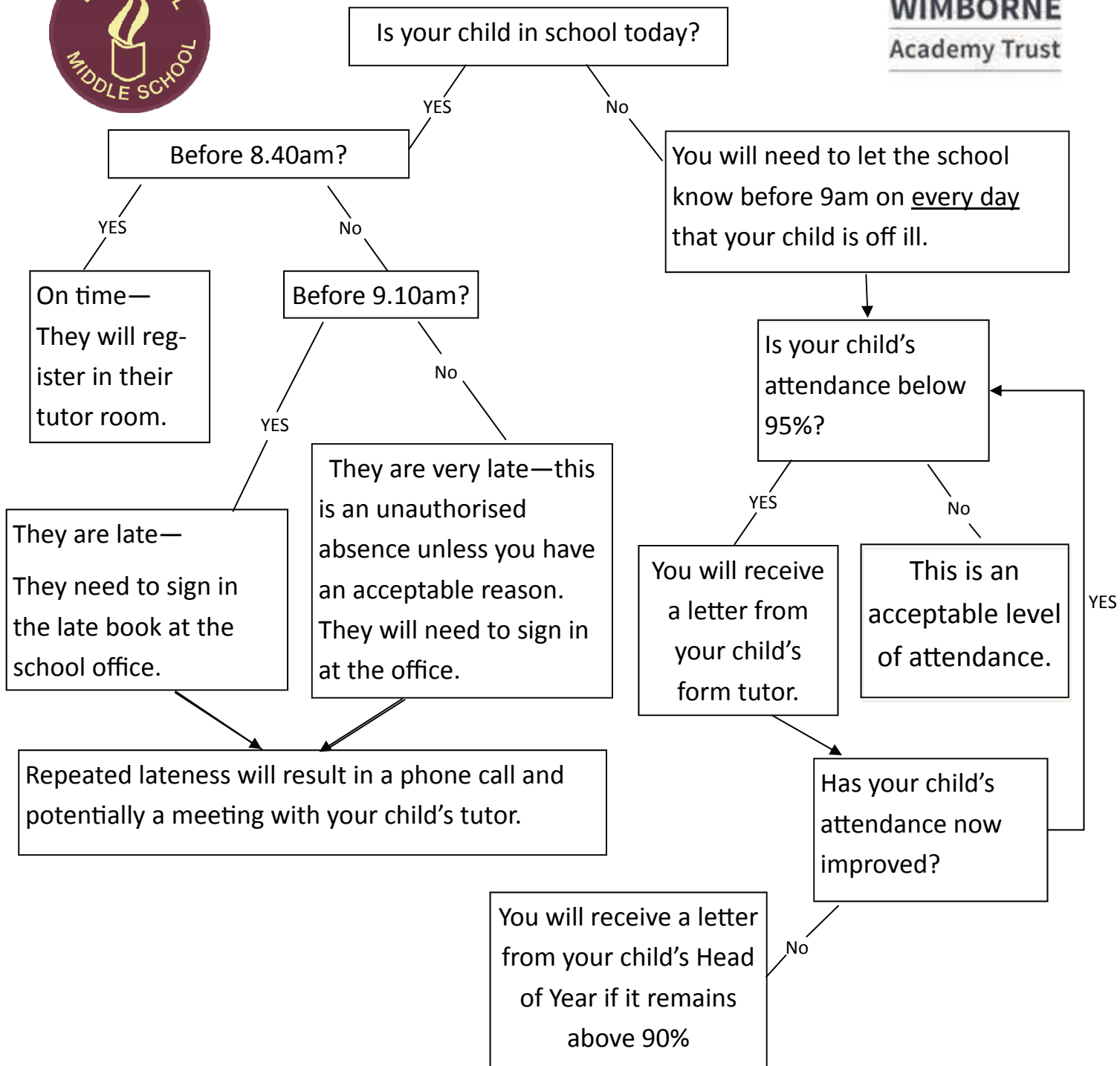




## **EMS School Attendance**

**WIMBORNE**  
Academy Trust



**If at any time your child’s attendance is below 90%:**

You will receive a letter from the Assistant Headteacher requesting a meeting to discuss support strategies.

Absences will not be authorised without medical evidence.

You will be given 3 weeks to improve the attendance before the Local Authority Schools Attendance Service is contacted. The Local Authority Schools Attendance Service and school will continue to offer support with improving the attendance of your child.